

# Standard Elevate Banner Stand



## STAND Elevate

Towering over 8' tall, this banner stand makes a maximum impact with these ease and convenience of a retracting banner.



## features and benefits:

- Variable heights 31.5" - 95.25"
- Black aluminum body with chrome end caps and adjustable feet
- Super tall 4-piece telescopic pole
- Snap rail
- Roller access via flip-flop lid and removable self-locking graphic roller mechanism
- Five year warranty against all manufacturer defects

## dimensions:

### Hardware

#### Base dimensions:

35.5" w x 2.75" h x 8" d  
902mm(w) x 70mm(h) x 203mm(d)

#### Assembled unit dimensions:

35.5" w x 34.5" - 97.5" h x 8" d  
902mm(w) x 876mm - 2477mm(h) x 203mm(d)

**Weight:** 10 lbs / 4.5 kgs

#### Bag Dimensions:

36.5" w x 4" h x 9" d  
927mm(w) x 102mm(h) x 229mm(w)

### Shipping

#### Shipping dimensions: (ships in one box)

39" l x 6" w x 10" h  
991mm(l) x 152mm(w) x 254mm(h)

**Shipping weight:** 14 lbs / 6.4 kgs

### Graphic

Refer to related graphic template for more information.

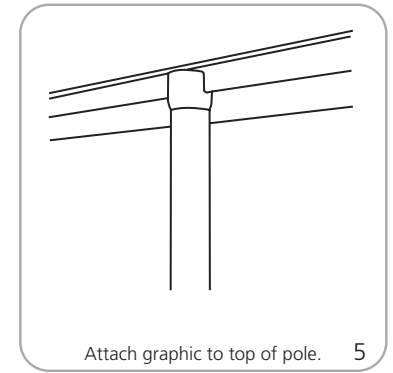
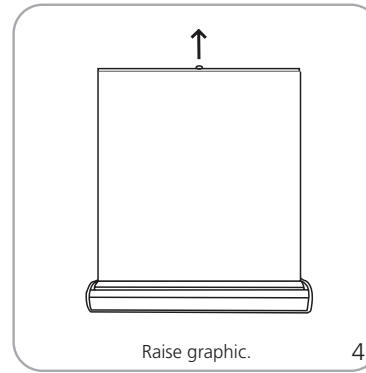
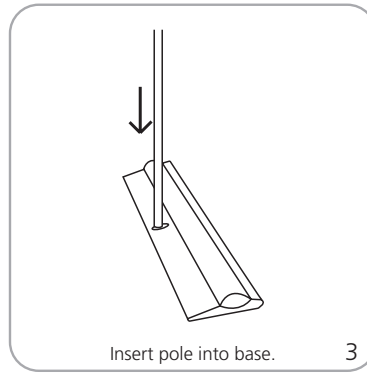
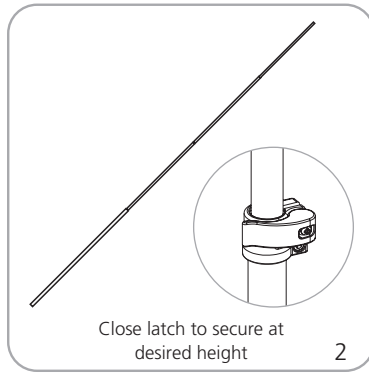
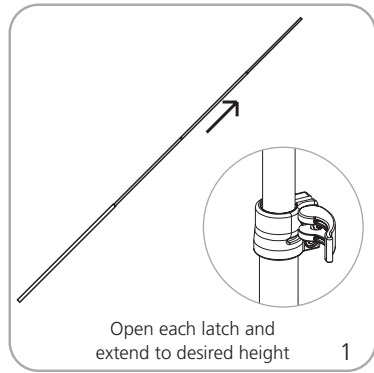
## additional information:

### Graphic materials:

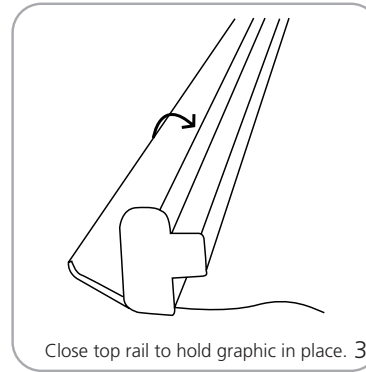
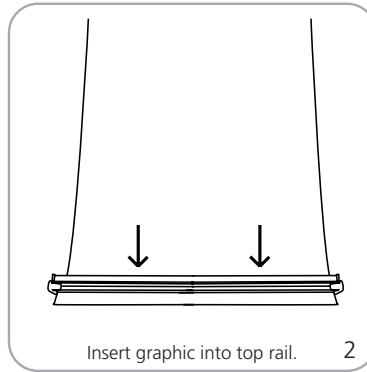
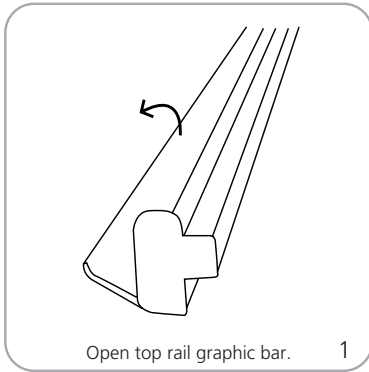
anti-curl vinyl, opaque fabric, melinex

We are continually improving and modifying our product range and reserve the right to vary the specifications without prior notice. All dimensions and weights quoted are approximate and we accept no responsibility for variance. E&OE. See Graphic Templates for graphic bleed specifications.

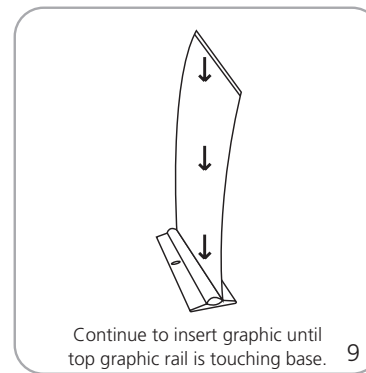
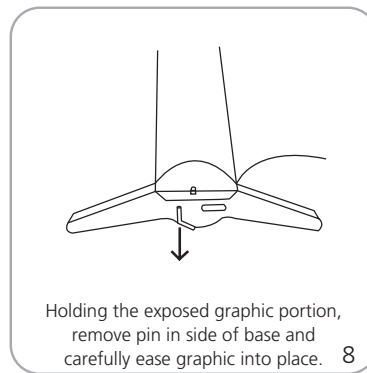
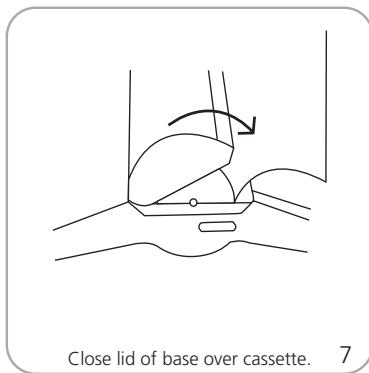
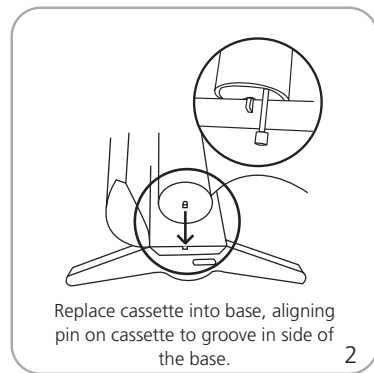
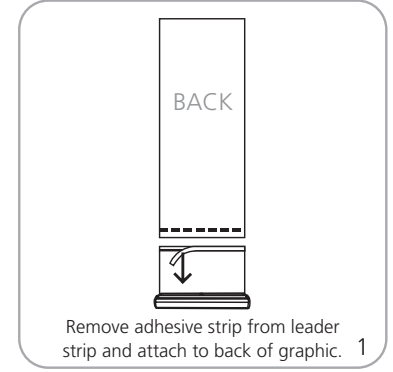
## Banner Stand Assembly



## Top Rail Attachment



## Bottom Graphic Attachment - Roller



## Retensioning

